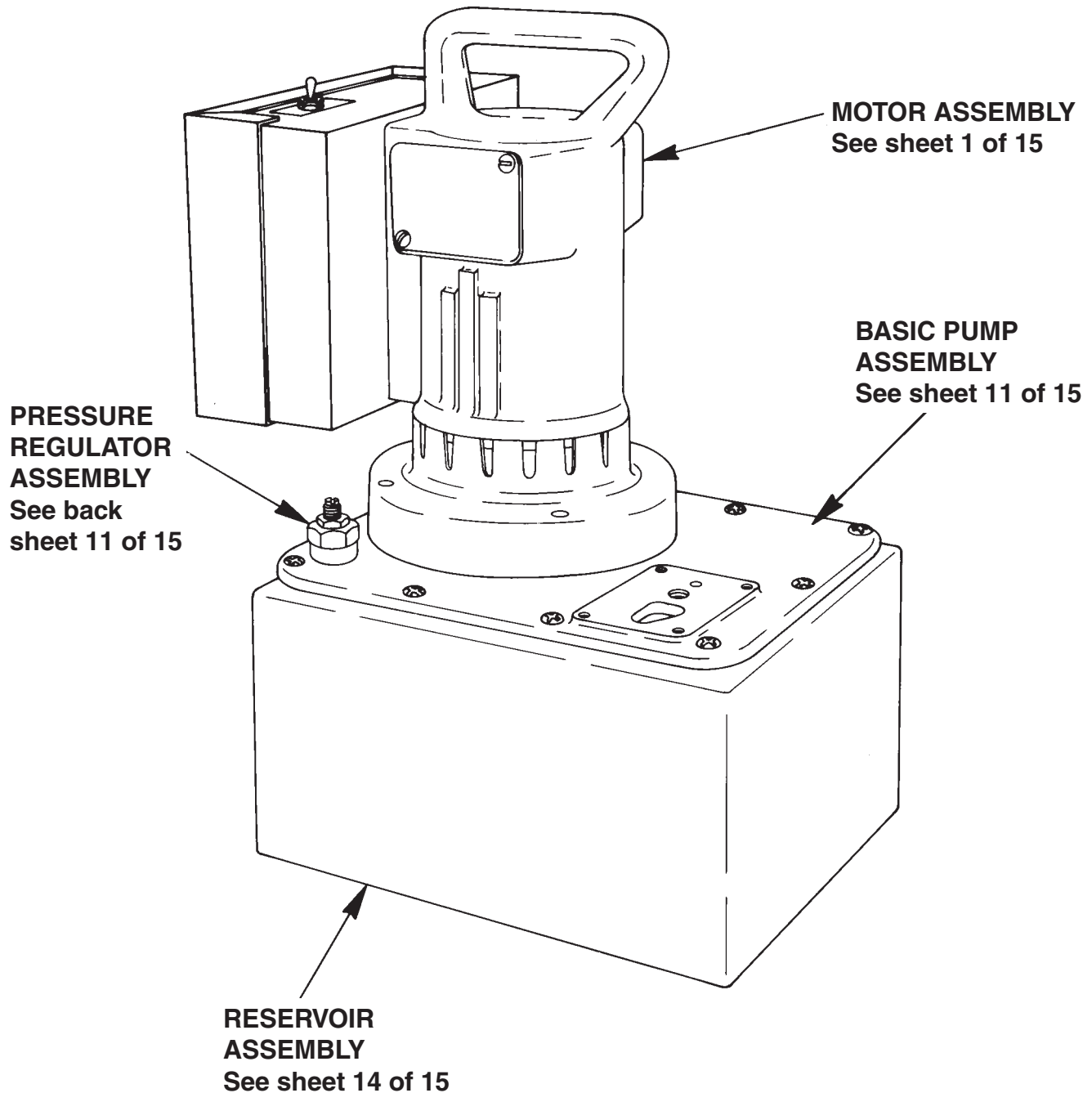
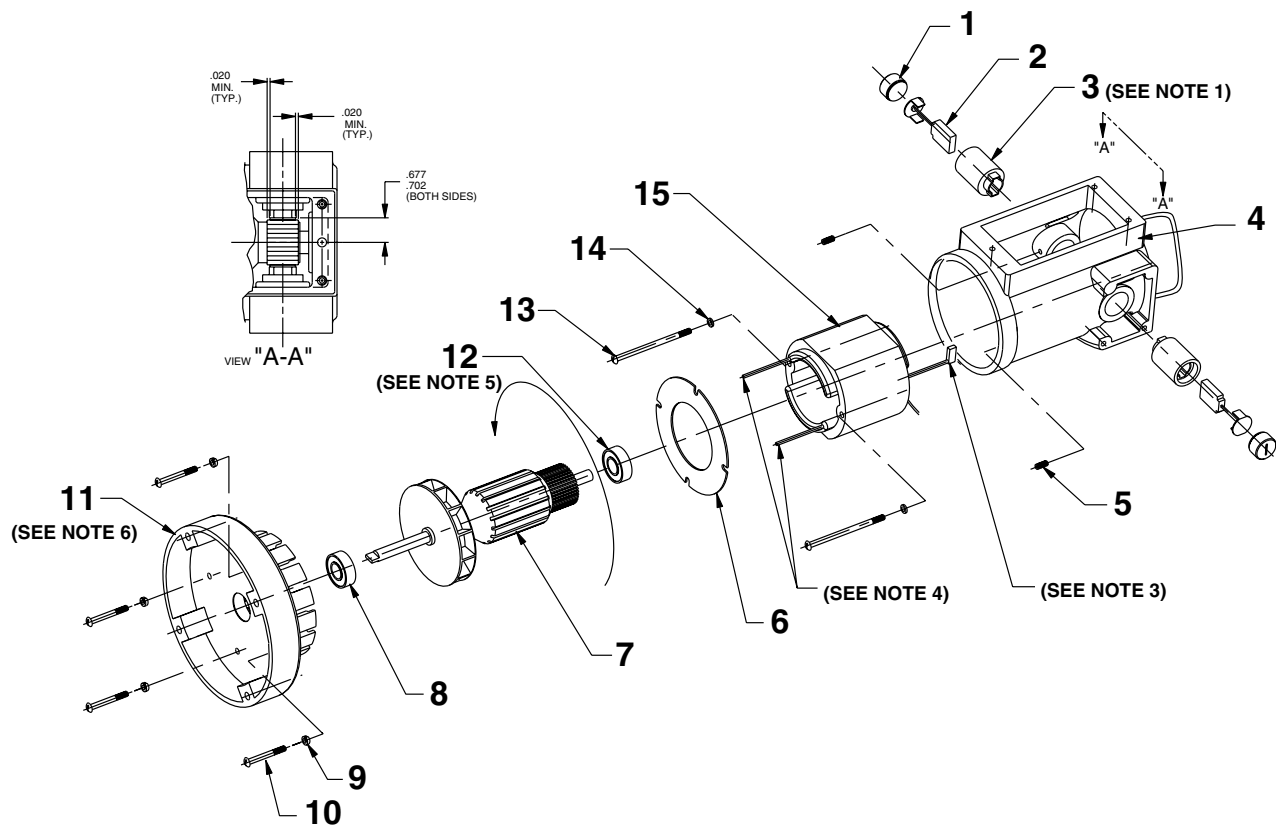


Parts List for:		PE554C-C
AHC-10E	PE552S-C	PE554PT
PE552	PE553	PE554S
PE552-C	PE553-C	PE554S-BOLT
PE552A	PE554	PE554S-C
PE552A-C	PE554-C	PE554T
PE552S	PE554C	PE554T-C

MODEL C  
(MODEL A for AHC-10E)  
**ELECTRIC TWO-STAGE HYDRAULIC PUMP**  
GENERAL SECTION



## UNIVERSAL MOTOR



Item No.	Part No.	No. Req'd	Description
1	10806	2	Brush Holder Cap
2	10804	2	Brush
3	10805	2	Brush Holder
4	61901WH2	1	Motor Shell
5	10133	2	Screw (#10-24 UNC x 1/4 Lg.)
6	20786	1	Baffle Plate
7	10800	1	Armature (115 V.)
	*58841A	1	Armature (230 V.)
8	10439	1	Ball Bearing
9	10241	4	Lockwasher (For #10 bolt)

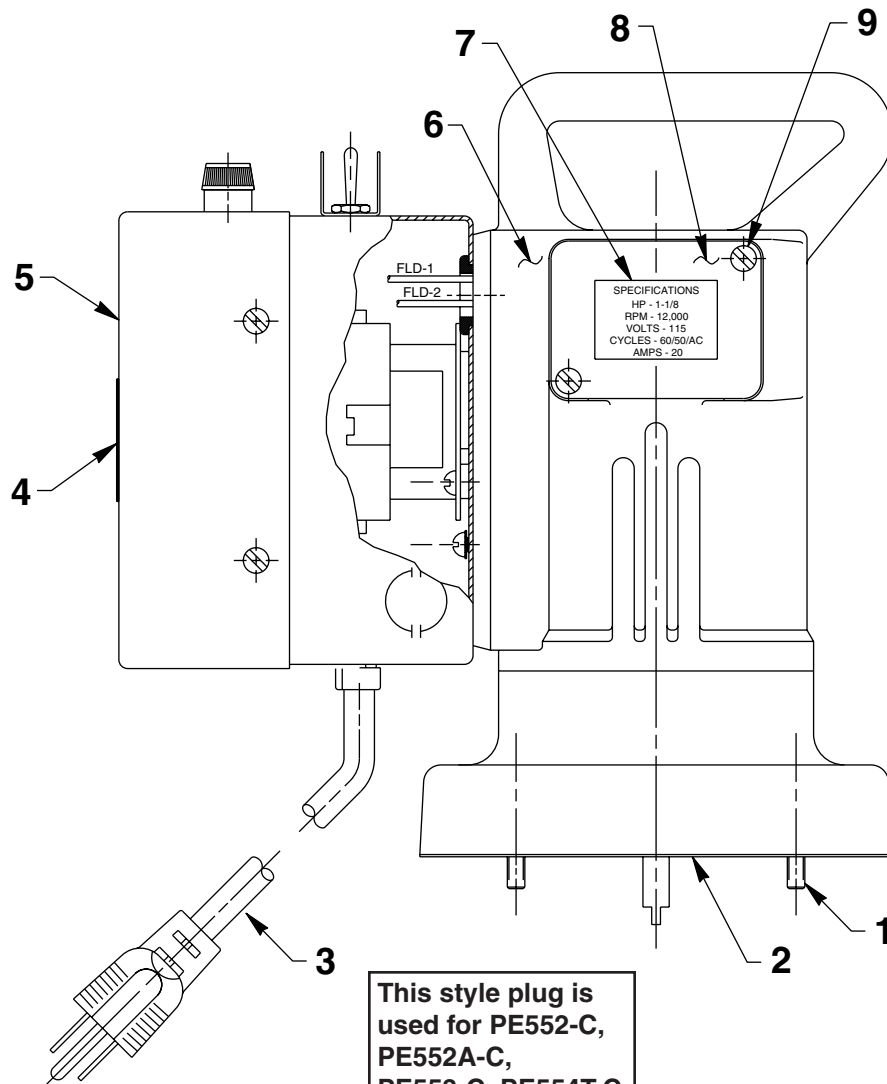
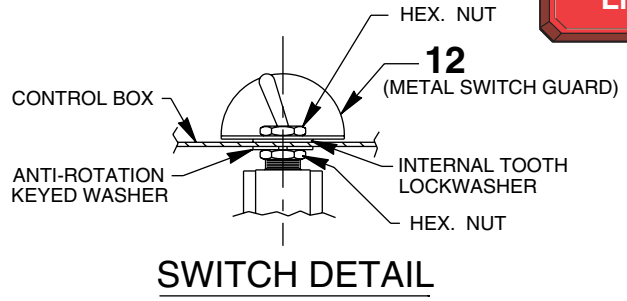
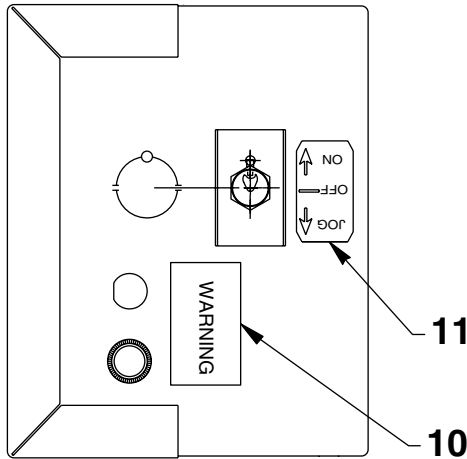
Item No.	Part No.	No. Req'd	Description
10	10169	4	Screw (#10-24 UNC x 2" Lg.; Torque to 20/25 in. lbs.)
11	351416WH2	1	Motor Base
12	10438	1	Ball Bearing
13	10170	2	Screw (#10-24 UNC x 3-1/4 Lg.)
14	12356	2	Washer (#10 Internal Tooth)
15	10802	1	Field (115 V.)
	*58841F	1	Field (230 V.)

- Notes:**
1. Brush holders (Item #3) must be installed with slot and dimple facing the open end of the motor shell casting.
  2. Stator must be installed with part no. and date code up (must be visible through the rectangular opening in the motor shell casting).
  3. Insert flag terminals into adjacent brush holders.
  4. Line leads must be routed through the rectangular opening in the motor shell casting.
  5. Press bearings into armature and install as a unit into the motor shell casting.
  6. Casting number must be on top when the motor base casting is fastened to the motor shell casting.

**\*NOTE:** If replacing the field or armature on 230 V. motors, order kit no. 252311.

# MOTOR ASSY. - MANUAL & AUTO OPEN/TANDEM CENTER VALVES

(For PE552, PE552-C, PE552A, PE552A-C, PE553, PE553-C, PE554, PE554-C, PE554PT, PE554T & PE554T-C)



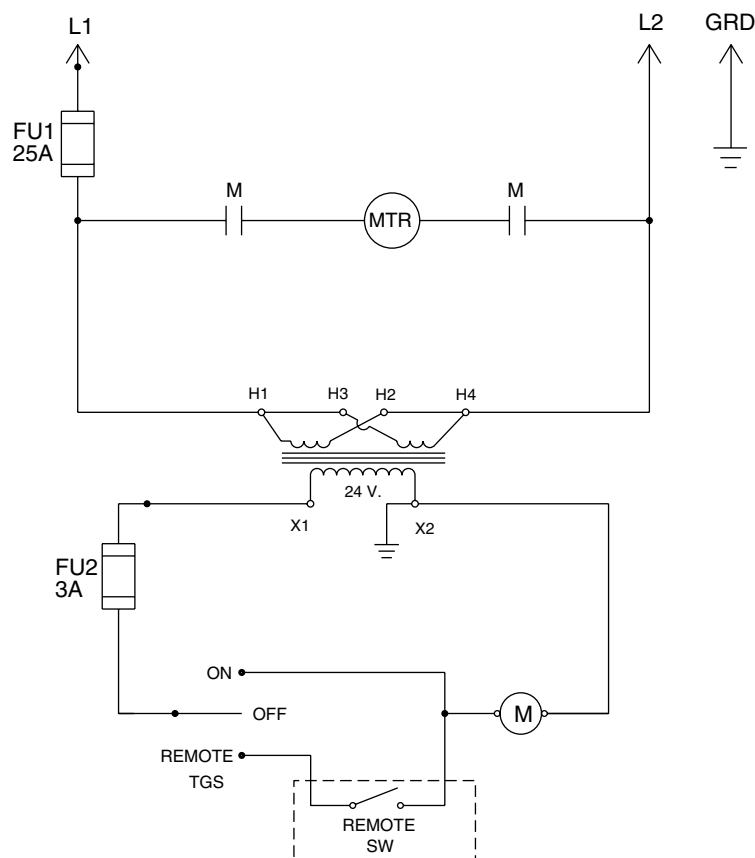
This style plug is used for PE552-C, PE552A-C, PE553-C, PE554T-C & PE554-C.

Item No.	Part No.	No. Req'd	Description
1	10022	4	Screw (1/4-20 x 1-1/2 Lg.)
2	30650	1	Motor Base Gasket
3	307440	1	Cord (8 ft. lg.; 115 V. 12/3 SJTO; For PE552, PE552A, PE553, PE554, PE554T & PE554PT)
	350155	1	Cord (8 ft. lg.; 115 V. 12/3 SJTO; For PE552-C, PE552A-C, PE553-C, PE554-C & PE554T-C)
4	200188	1	Decal (Warning/Important)
5	43126WH2	1	Control Box Cover
6	53338	1	Universal Motor Assembly (110/115 V., 50/60 Hz.; See back sheet 1 of 15)
7	215164	1	Specifications Decal
8	21008	2	Cover
9	11539	4	Screw (10-24 x 1/4 Lg.)
10	252305	1	Warning Decal
11	352080	1	Decal (ON/OFF/JOG)
12	352061	1	Metal Switch Guard



## ELECTRICAL SCHEMATIC - MANUAL & AUTO OPEN/TANDEM CENTER VALVES

115 V., 60 Hz.



To help avoid personal injury, all electrical work must be done by a qualified electrician.

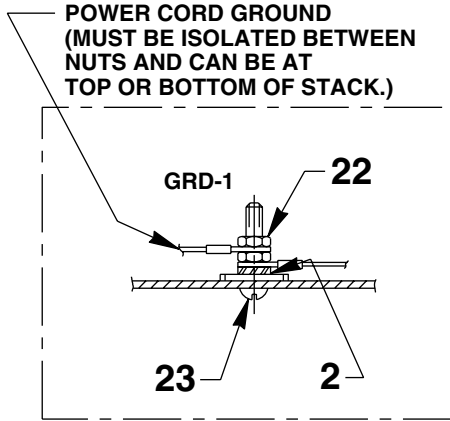
### North American & International Color Codes

Conductors	North American	International
Line.....	Black	Brown
Neutral.....	White	Blue
Ground.....	Green	Green/Yellow

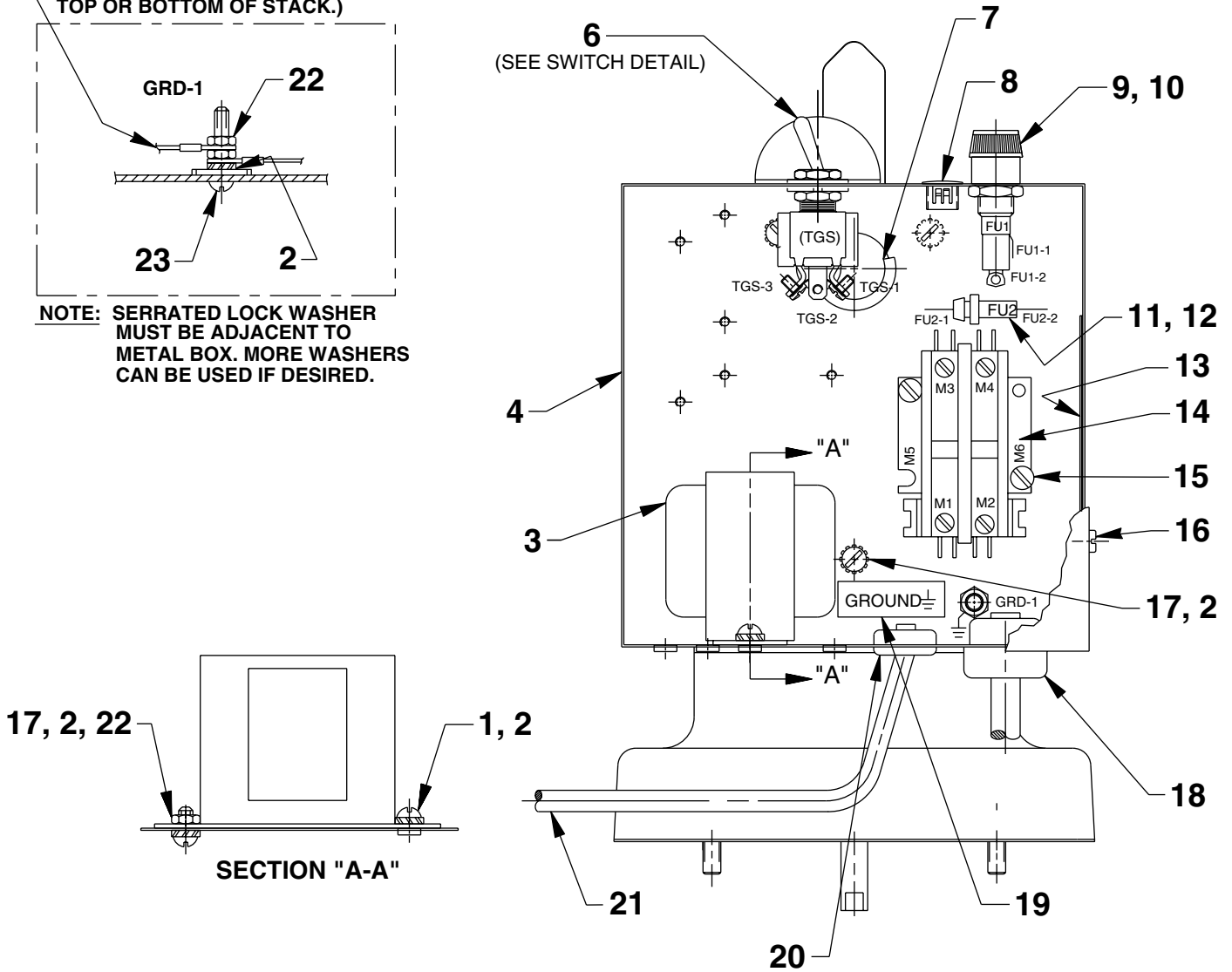
# MOTOR CONTROL BOX - MANUAL & AUTO OPEN/TANDEM CENTER VALVES



(For PE552, PE552-C, PE552A, PE552A-C, PE553, PE553-C,  
PE554, PE554-C, PE554PT, PE554T & PE554T-C)



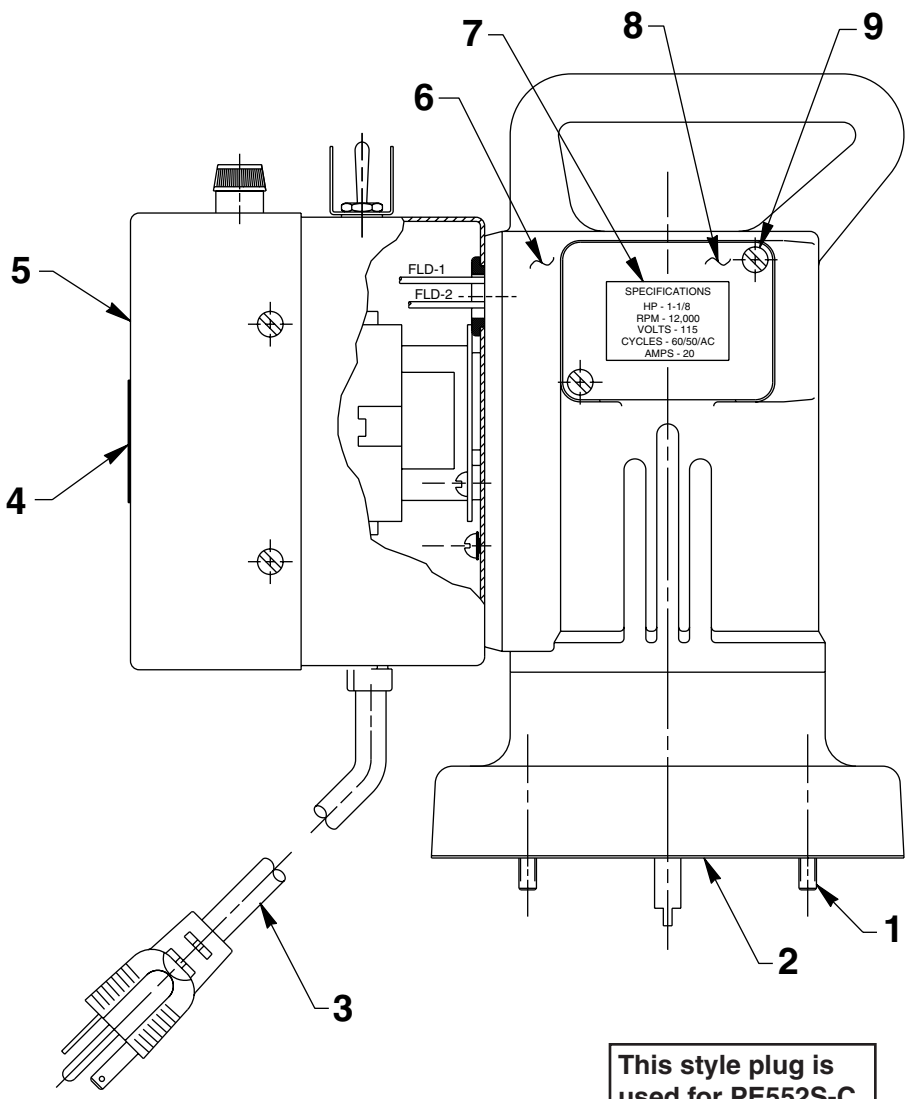
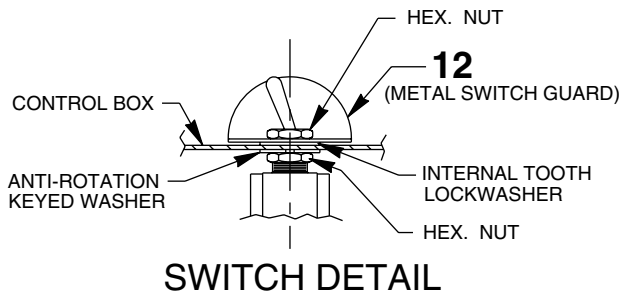
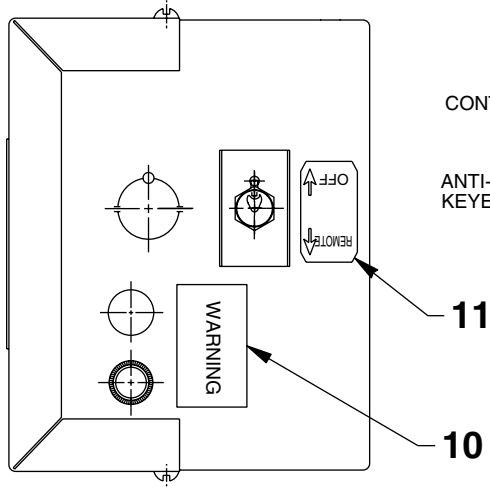
**NOTE:** SERRATED LOCK WASHER  
MUST BE ADJACENT TO  
METAL BOX. MORE WASHERS  
CAN BE USED IF DESIRED.



<b>Item No.</b>	<b>Part No.</b>	<b>No. Req'd</b>	<b>Description</b>
1	<b>11539</b>	1	Screw (10-24 x 1/4 Lg.)
2	<b>11108</b>	6	External Tooth Washer (.40 x .20)
3	<b>11852</b>	1	Transformer
4	<b>65264WH2</b>	1	Electrical Control Box
6	<b>12665</b>	1	Toggle Switch
7	<b>15497</b>	1	Rubber Grommet
8	<b>17782</b>	1	Snap Plug
9	<b>18292</b>	1	Fuse Holder
10	<b>252289</b>	1	Fuse (25 amp 125 V.)
11	<b>16887</b>	1	Fuse Holder
12	<b>206962</b>	1	Fuse (3 amp 250 V.)
13	<b>250150</b>	1	Warning Decal
14	<b>420718-4</b>	1	Contacto
15	<b>10166</b>	2	Screw (10-24 x 1/2 Lg.)
16	<b>14812</b>	4	Screw (8-18 x 3/8 Lg.)
17	<b>10164</b>	4	Screw (10-24 x 3/8 Lg.)
18	<b>210112</b>	1	Strain Relief Bushing
19	<b>205189</b>	1	Decal (Ground)
20	<b>15993</b>	1	Strain Relief Bushing
21	<b>25017</b>	1	Hand Switch Assembly (See Parts List No. 101644)
22	<b>10197</b>	3	Hex Nut (10-24)
23	<b>11856</b>	1	Screw (10-24 x 1" Lg.)



# MOTOR ASSY. - 2-WAY SOLENOID VALVES (FOR PE552S-C & PE552S)

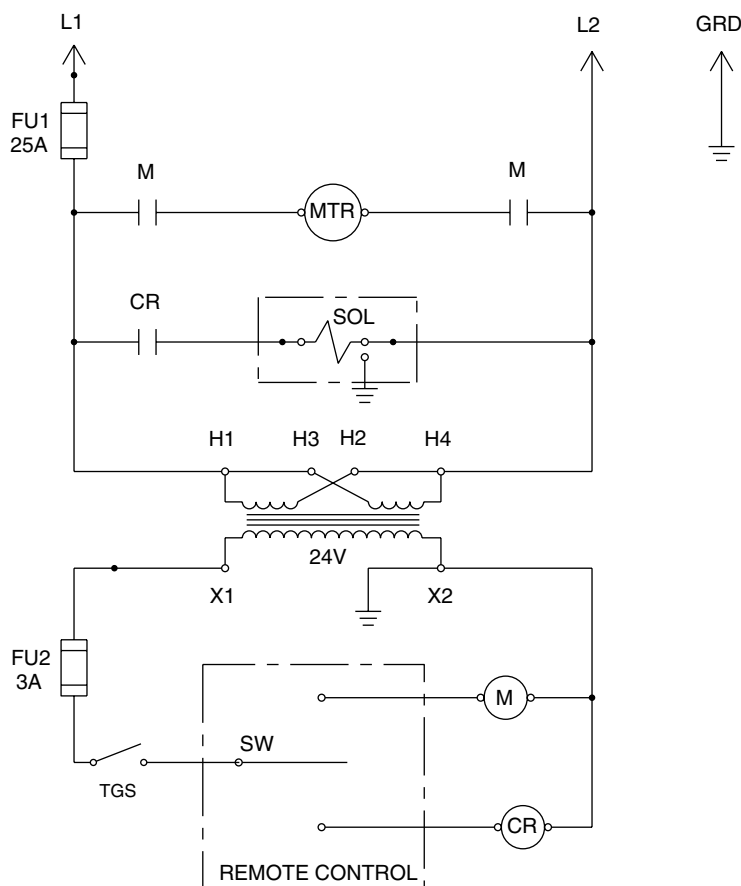


This style plug is used for PE552S-C.

Item No.	Part No.	No. Req'd	Description
1	10022	4	Screw (1/4-20 x 1-1/2 Lg.)
2	30650	1	Motor Base Gasket
3	307440	1	Cord (8 ft. lg.; 115 V. 12/3 SJTO; For PE552S)
	350155	1	Cord (8 ft. lg.; 115 V. 12/3 SJTO; For PE552S-C)
4	200188	1	Decal (Warning/Important)
5	43126WH2	1	Control Box Cover
6	53338	1	Universal Motor Assembly (110/115 V. 50/60 Hz.; See back sheet 1 of 15)
7	215164	1	Specifications Decal
8	21008	2	Cover
9	11539	4	Screw (10-24 x 1/4 Lg.)
10	252305	1	Warning Decal
11	360069	1	Decal (Remote/Off)
12	352061	1	Metal Switch Guard



## ELECTRICAL SCHEMATIC - 2-WAY SOLENOID VALVES 115 V., 60 Hz.



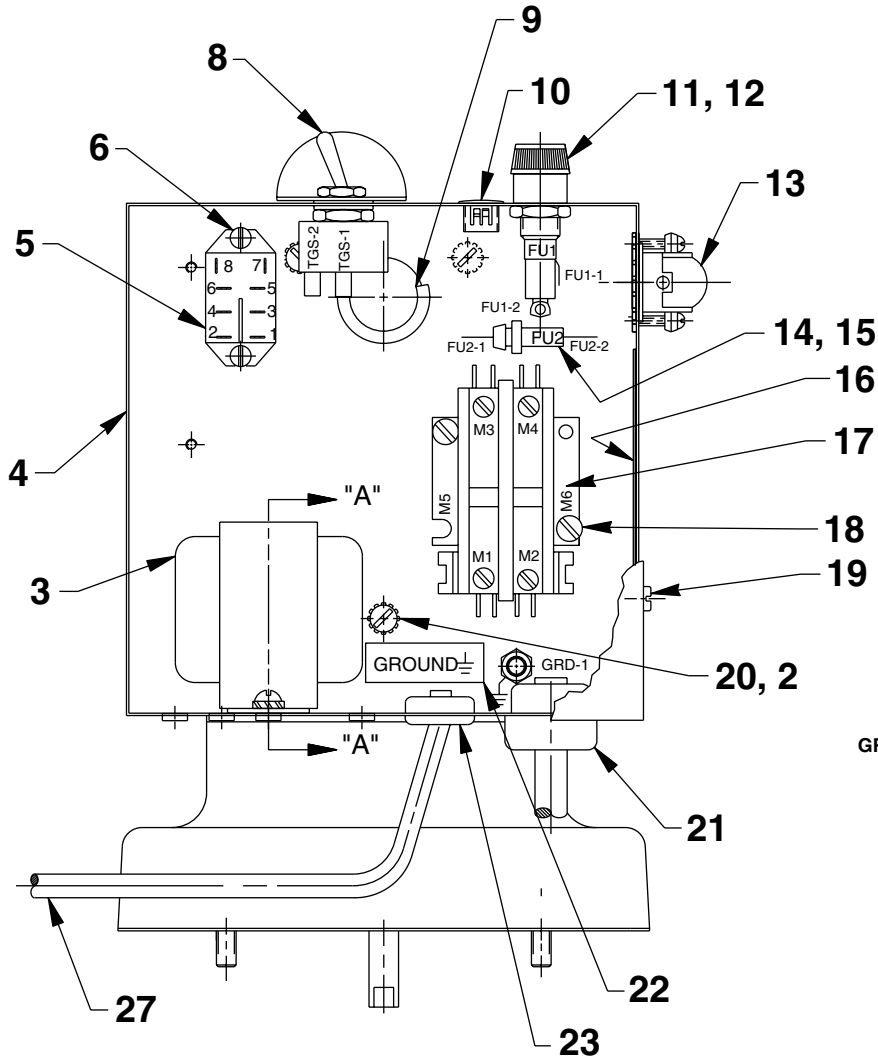
### WARNING

To help avoid personal injury, all electrical work must be done by a qualified electrician.

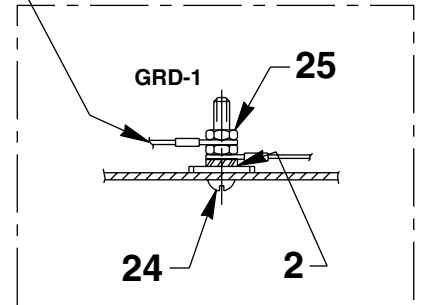
### North American & International Color Codes

Conductors	North American	International
Line	Black	Brown
Neutral	White	Blue
Ground	Green	Green/Yellow

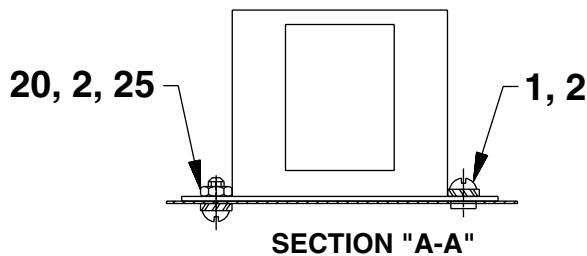
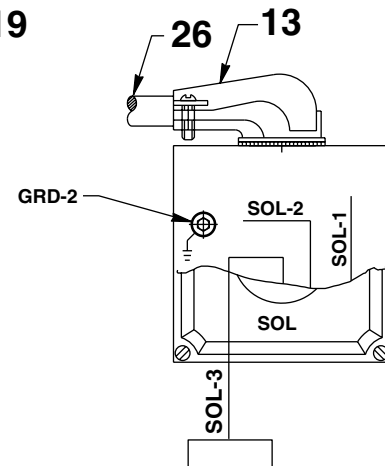
**MOTOR CONTROL BOX - 2-WAY SOLENOID VALVES**  
(FOR PE552S-C & PE552S)



POWER CORD GROUND  
(MUST BE ISOLATED BETWEEN  
NUTS AND CAN BE AT  
TOP OR BOTTOM OF STACK.)



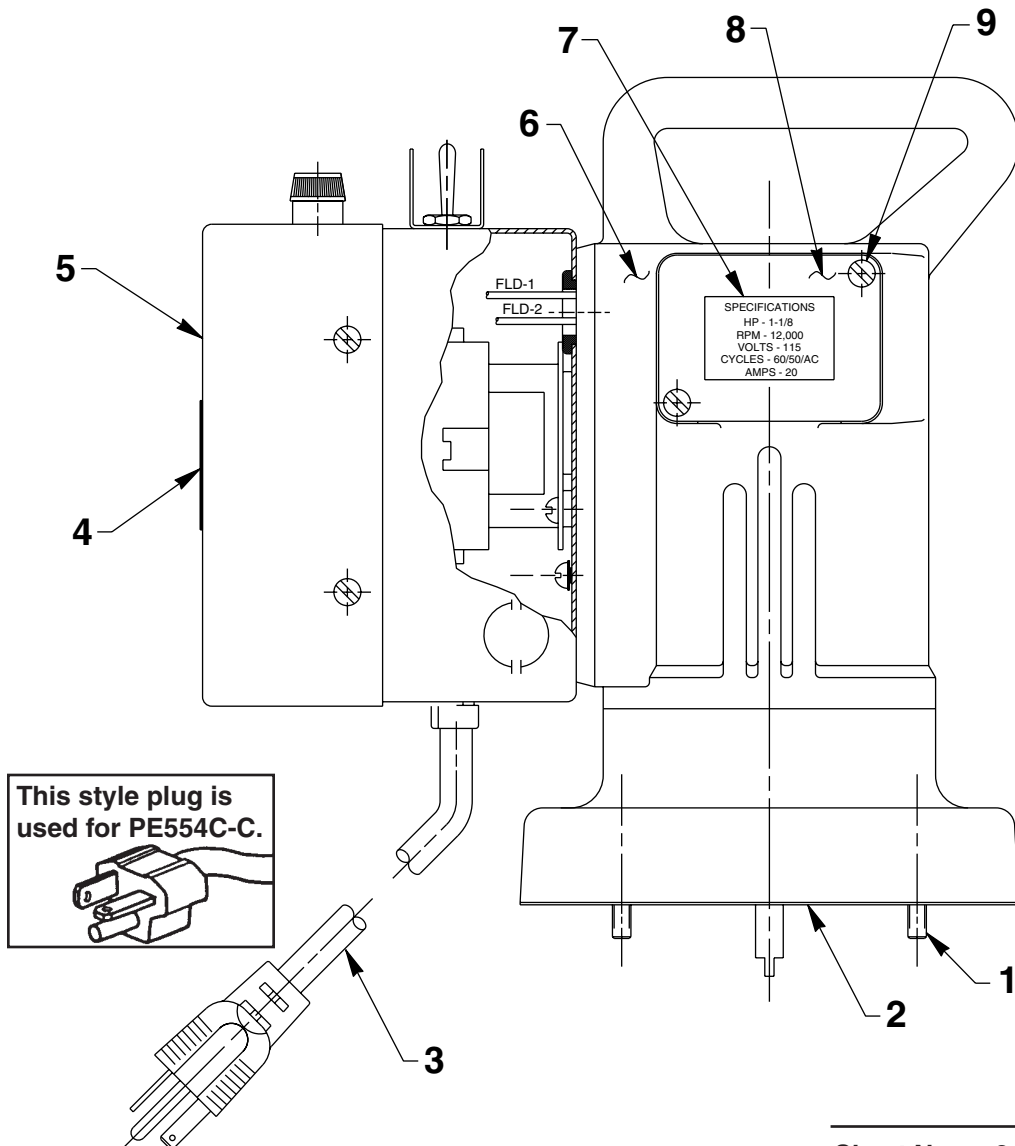
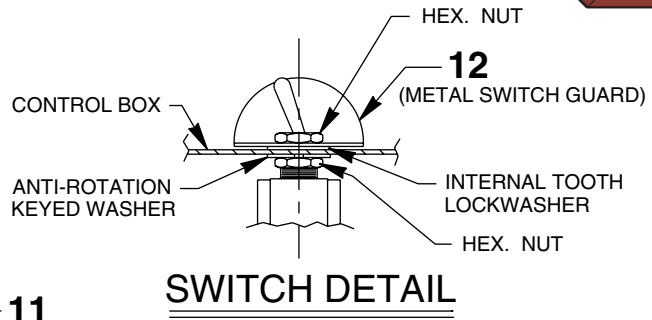
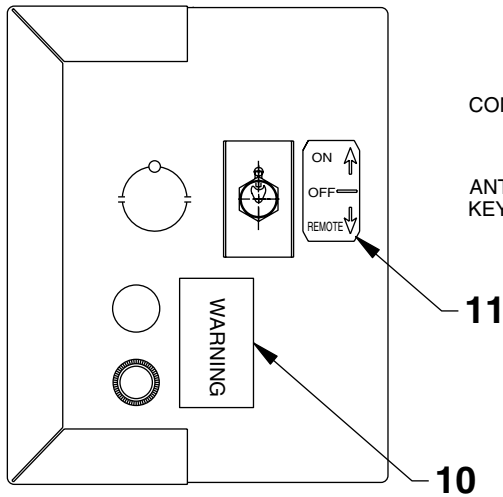
**NOTE:** SERRATED LOCK WASHER  
MUST BE ADJACENT TO  
METAL BOX. MORE WASHERS  
CAN BE USED IF DESIRED.



Item No.	Part No.	No. Req'd	Description
1	11539	1	Screw (10-24 x 1/4 Lg.)
2	11108	6	External Tooth Washer (.40 x .20)
3	11852	1	Transformer
4	65264WH2	1	Electrical Control Box
5	251046	1	General Purpose Relay
6	17563	2	Screw (6-32 x 1/4 Lg.)
8	12301	1	Toggle Switch
9	15497	1	Rubber Grommet
10	17782	1	Snap Plug
11	18292	1	Fuse Holder
12	252289	1	Fuse (25 amp 125 V.)
13	11144	2	90° Elbow Connector
14	16887	1	Fuse Holder
15	206962	1	Fuse (3 amp 250 V.)
16	250150	1	Warning Decal
17	420718-4	1	Contact (2 pole)
18	11539	2	Screw (10-24 x 1/4 Lg.)
19	14812	4	Screw (8-18 x 3/8 Lg.)
20	10164	4	Screw (10-234 x 3/8 Lg.)
21	210112	1	Strain Relief Bushing
22	205189	1	Decal (Ground)
23	15993	1	Strain Relief Bushing
24	11856	1	Screw (10-24 x 1" Lg.)
25	10197	3	Hex Nut (10-24)
26	12293	2.33'	Cable (16/3 SJTO)
27	307491	1	Hand Switch Assembly (See sheet 15 of 15)



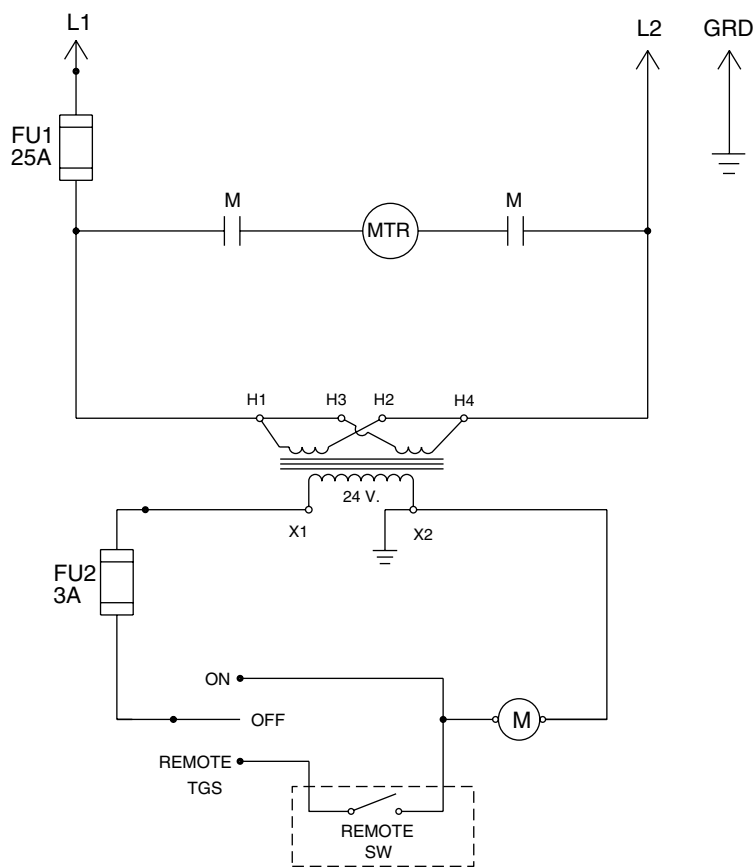
# MOTOR ASSY. - CLOSED CENTER VALVES (For PE554C & PE554C-C)



Item No.	Part No.	No. Req'd	Description
1	10022	4	Screw (1/4-20 x 1-1/2 Lg.)
2	30650	1	Motor Base Gasket
3	307440	1	Cord (8 ft. lg.; 115 V. 12/3 SJTO; For PE552S)
	350155	1	Cord (8 ft. lg.; 115 V. 12/3 SJTO; For PE552S-C)
4	200188	1	Decal (Warning/Important)
5	43126WH2	1	Control Box Cover
6	53338	1	Universal Motor Assembly (110/115 V. 50/60 Hz.; See back sheet 1 of 15)
7	215164	1	Specifications Decal
8	21008	2	Cover
9	11539	4	Screw (10-24 x 1/4 Lg.)
10	252305	1	Warning Decal
11	352080	1	Decal (ON/OFF/REMOTE)
12	352061	1	Metal Switch Guard



### ELECTRICAL SCHEMATIC - CLOSED CENTER VALVES 115 V., 60 Hz. W/24V Secondary



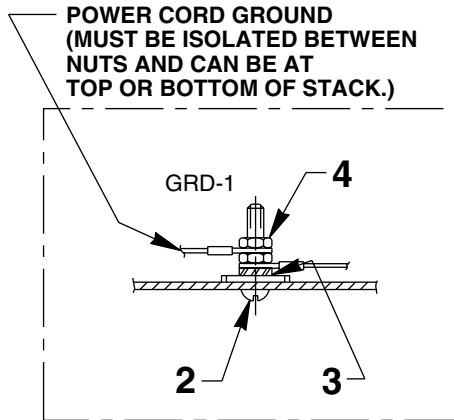
## WARNING

To help avoid personal injury, all electrical work must be done by a qualified electrician.

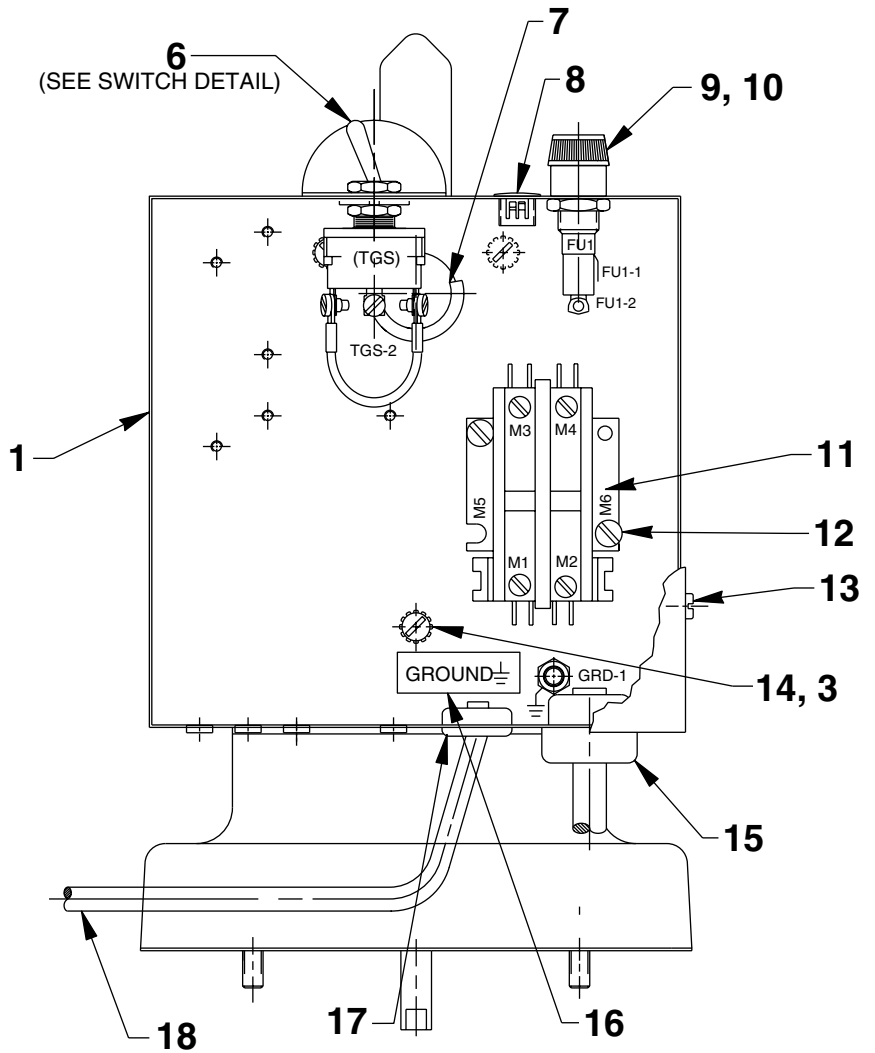
### North American & International Color Codes

Conductors	North American	International
Line.....	Black	Brown
Neutral.....	White	Blue
Ground.....	Green	Green/Yellow

# MOTOR CONTROL ASSEMBLY (For PE554C)



**NOTE:** SERRATED LOCK WASHER  
MUST BE ADJACENT TO  
METAL BOX. MORE WASHERS  
CAN BE USED IF DESIRED.



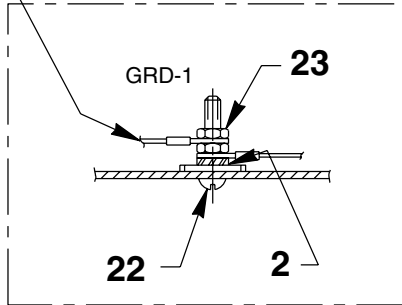
Item No.	Part No.	No. Req'd	Description
1	65264WH2	1	Electrical Control Box
2	11856	1	Screw (10-24 x 1" Lg.)
3	11108	6	External Tooth Washer (.40 x .20)
4	10197	3	Hex Nut (10-24)
6	12665	1	Toggle Switch
7	15497	1	Rubber Grommet
8	17782	1	Snap Plug
9	18292	1	Fuse Holder
10	252289	1	Fuse (25 amp 125 V.)
11	420718-1	1	Contactor (2 pole)
12	10166	3	Screw (10-24 x 1/2 Lg.)
13	14812	4	Screw (8-18 x 3/8 Lg.)
14	10164	4	Screw (10-234 x 3/8 Lg.)
15	210112	1	Strain Relief Bushing
16	205189	1	Decal (Ground)
17	15993	1	Strain Relief Bushing
18	203225	1	Hand Switch Assembly (Heavy Duty Rubber; Not shown)



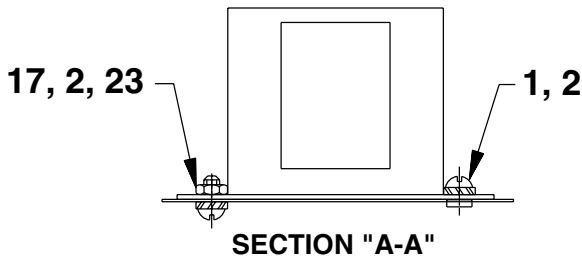
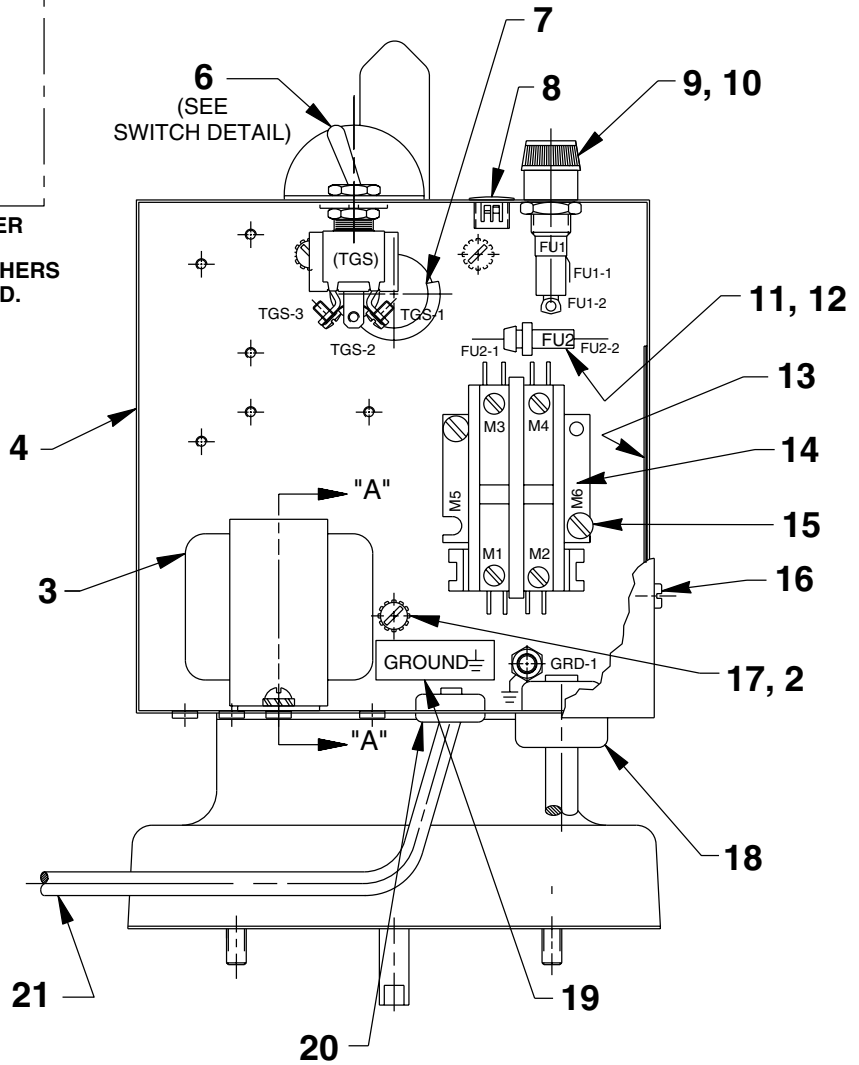
# MOTOR CONTROL ASSEMBLY (For PE554C-C)



POWER CORD GROUND  
(MUST BE ISOLATED BETWEEN  
NUTS AND CAN BE AT  
TOP OR BOTTOM OF STACK.)



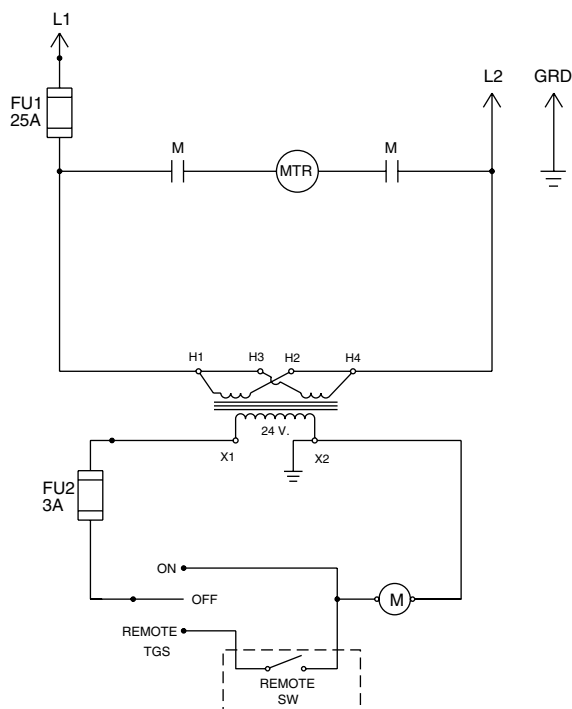
NOTE: SERRATED LOCK WASHER  
MUST BE ADJACENT TO  
METAL BOX. MORE WASHERS  
CAN BE USED IF DESIRED.



Item No.	Part No.	No. Req'd	Description
1	11539	1	Screw (10-24 x 1/4 Lg.)
2	11108	6	External Tooth Washer (.40 x .20)
3	11852	1	Transformer
4	65264WH2	1	Electrical Control Box
6	12665	1	Toggle Switch
7	15497	1	Rubber Grommet
8	17782	1	Snap Plug
9	18292	1	Fuse Holder
10	252289	1	Fuse (25 amp 125 V.)
11	16887	1	Fuse Holder
12	206962	1	Fuse (3 amp 250 V.)
13	250150	1	Warning Decal
14	420718-4	1	Contactor (2 pole)
15	10166	3	Screw (10-24 x 1/2 Lg.)
16	14812	4	Screw (8-18 x 3/8 Lg.)
17	10164	3	Screw (10-234 x 3/8 Lg.)
18	210112	1	Strain Relief Bushing
19	205189	1	Decal (Ground)
20	15993	1	Strain Relief Bushing
21	203225	1	Hand Switch Assembly (Heavy Duty Rubber; Not shown)
22	11856	1	Screw (10-24 x 1" Lg.)
23	10197	3	Hex Nut (10-24)



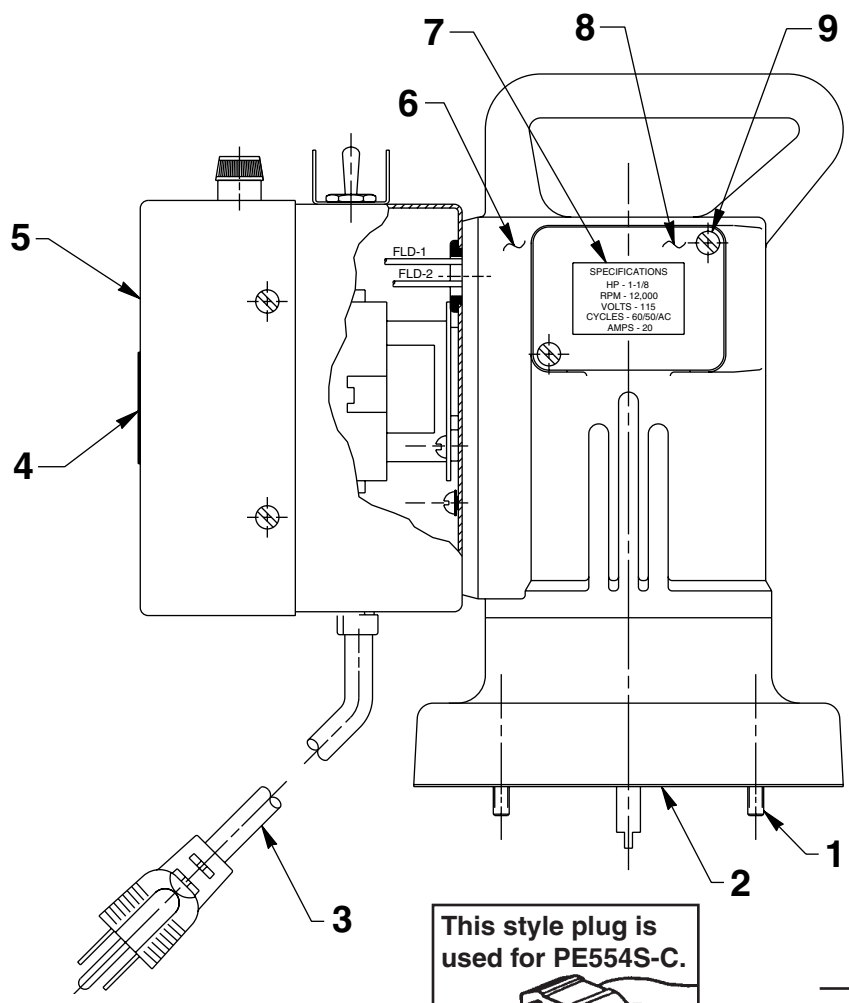
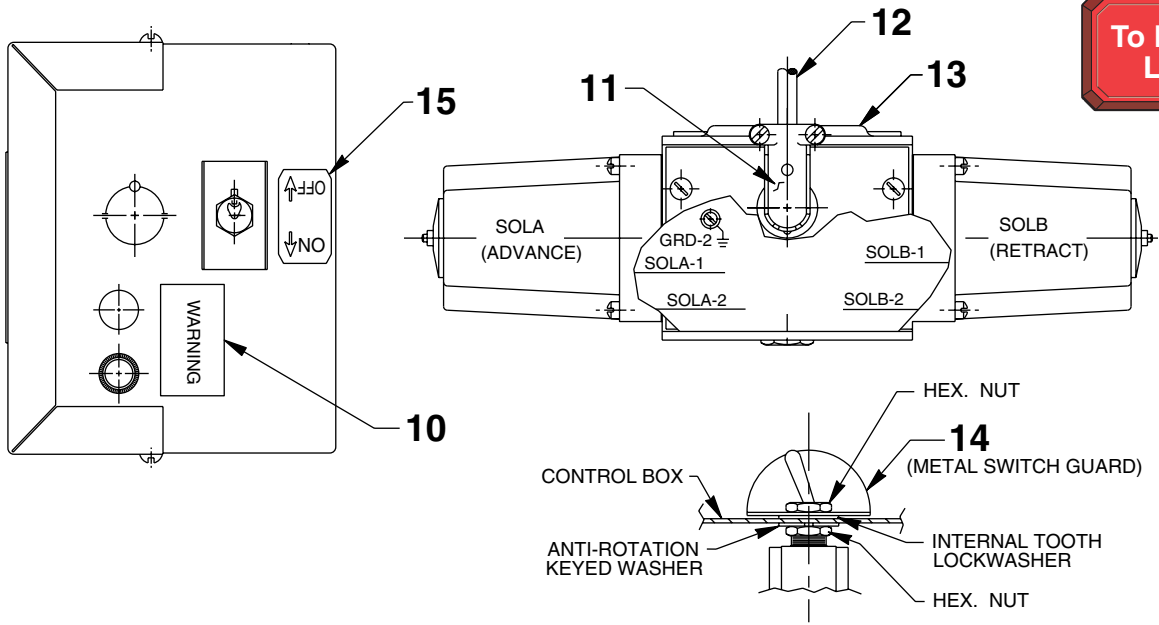
### ELECTRICAL SCHEMATIC 115V., 60 HZ.



# MOTOR ASSY. - 4-WAY SOLENOID VALVES

(For PE554S, PE554S-C, PE554S-BOLT & AHC-10E)

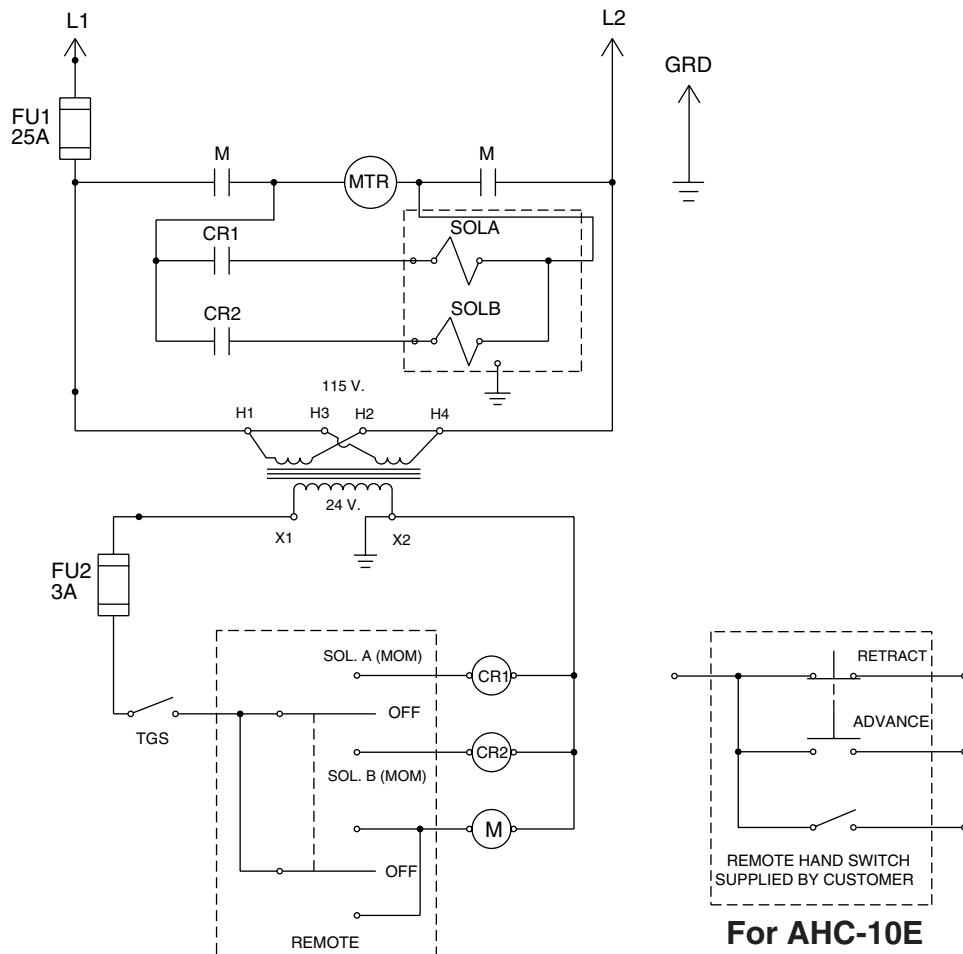
To Parts List



Item No.	Part No.	No. Req'd	Description
1	10022	4	Screw (1/4-20 x 1-1/2 Lg.)
2	30650	1	Motor Base Gasket
3	307440	1	Cord (8 ft. lg.; 115 V. 12/3 SJTO; For PE554S)
	350155	1	Cord (8 ft. lg.; 115 V. 12/3 SJTO; For PE554S-C)
4	200188	1	Decal (Warning/Important)
5	43126WH2	1	Control Box Cover
6	53338	1	Universal Motor Assembly (110/115 V. 50/60 Hz.; See back sheet 1 of 15)
7	215164	1	Specifications Decal
8	21008	2	Cover
9	11539	4	Screw (10-24 x 1/4 Lg.)
10	252305	1	Warning Decal
11	11144	1	90° Elbow Connector
12	66205-115	1	Solenoid Valve
13	15565	2.5 ft.	Cable (16/4 SO)
14	352061	1	Switch Guard
15	360069	1	Decal (REMOTE/OFF; For AHC-10E)
	205409	1	Decal (ON/OFF; For PE554S, PE554S-BOLT, & PE554S-C)



## ELECTRICAL SCHEMATIC - 4-WAY SOLENOID VALVES 115 V., 60 Hz.



### WARNING

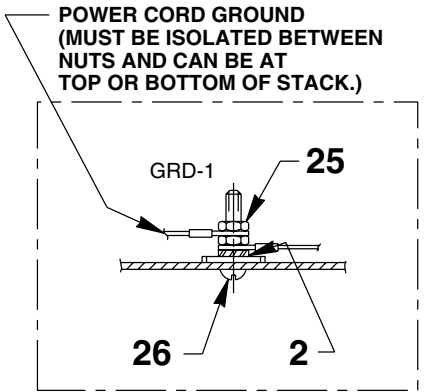
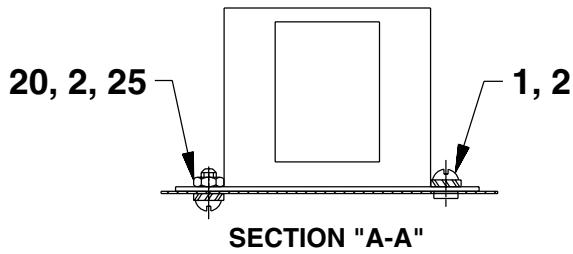
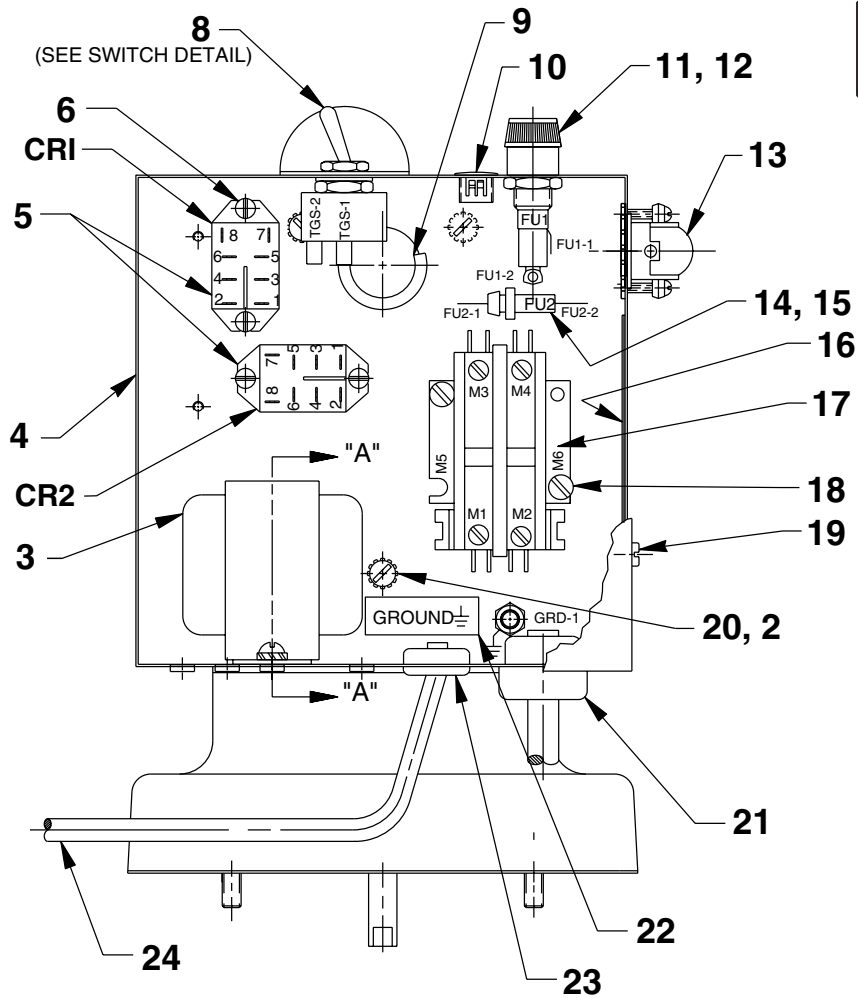
To help avoid personal injury, all electrical work must be done by a qualified electrician.

### North American & International Color Codes

Conductors	North American	International
Line.....	Black	Brown
Neutral.....	White	Blue
Ground.....	Green	Green/Yellow

# MOTOR CONTROL BOX - 4-WAY SOLENOID VALVES

(For PE554S, PE554S-C, PE554S-BOLT & AHC-10E)



POWER CORD GROUND  
(MUST BE ISOLATED BETWEEN  
NUTS AND CAN BE AT  
TOP OR BOTTOM OF STACK.)

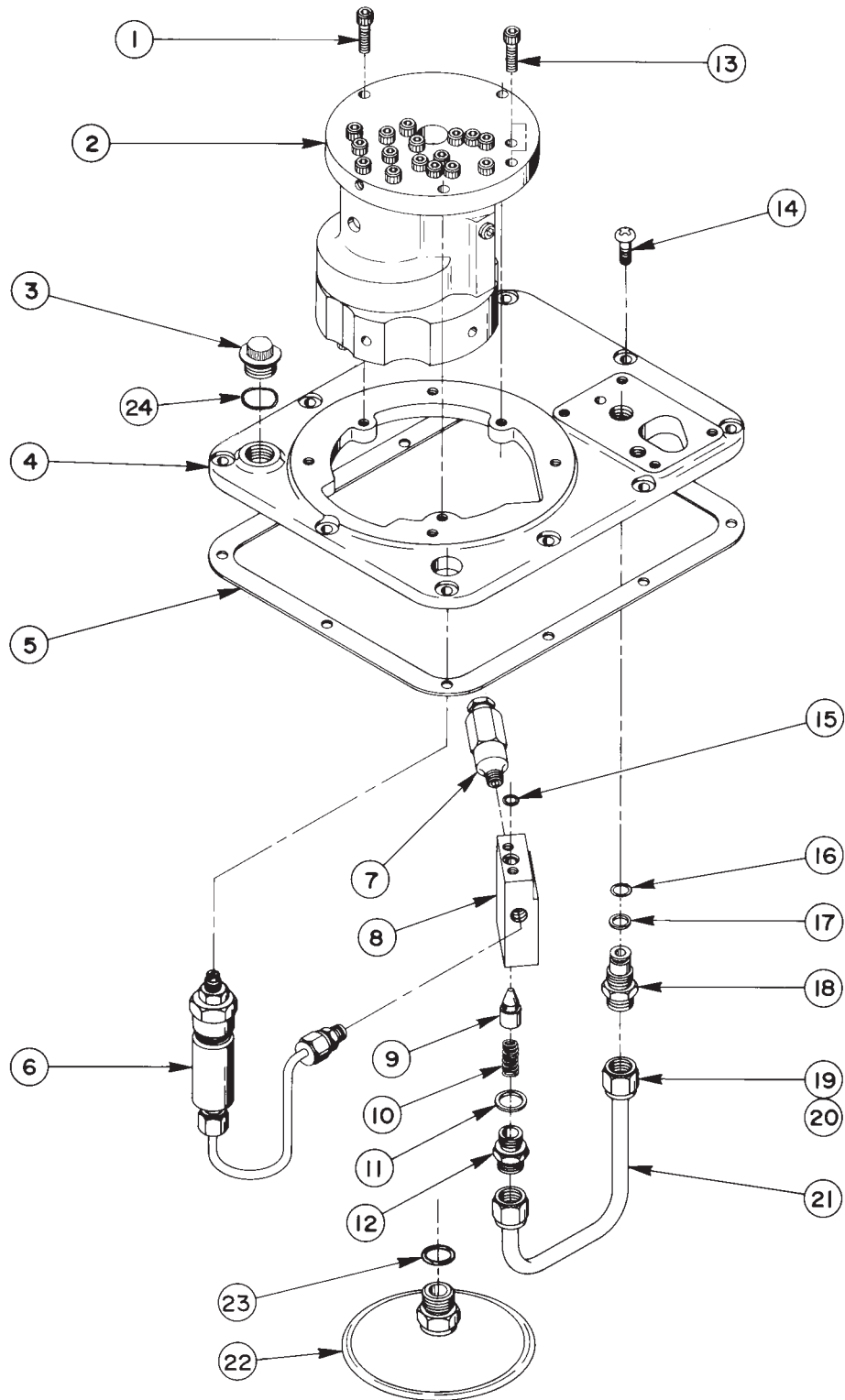
NOTE: SERRATED LOCK WASHER  
MUST BE ADJACENT TO  
METAL BOX. MORE WASHERS  
CAN BE USED IF DESIRED.

Item No.	Part No.	No. Req'd	Description
1	11539	1	Screw (10-24 x 1/4 Lg.; For PE554S, PE554S-C & AHC-10E)
	11539	2	Screw (10-24 x 1/4 Lg.; For PE554S-BOLT)
2	11108	6	External Tooth Washer (.40 x .20; For PE554S, PE554S-C & AHC-10E)
	11108	5	External Tooth Washer (.40 x .20; For PE554S-BOLT)
3	11852	1	Transformer
4	65264WH2	1	Electrical Control Box
5	251046	2	General Purpose Relay (For PE554S, PE554S-C & AHC-10E)
	251046	1	General Purpose Relay (For PE554S-BOLT)
6	17563	4	Screw (6-32 x 1/4 Lg.)
8	12301	1	Toggle Switch
9	15497	1	Rubber Grommet
10	17782	1	Snap Plug
11	18292	1	Fuse Holder
12	252289	1	Fuse (25 amp 125 V.)
13	11144	1	90° Elbow Connector
14	16887	1	Fuse Holder
15	206962	1	Fuse (3 amp 250 V.)
16	250150	1	Warning Decal
17	420718-4	1	Contactor (2 pole)
18	11539	2	Screw (10-24 x 1/4 Lg.)
19	14812	4	Screw (8-18 x 3/8 Lg.)
20	10164	3	Screw (10-234 x 3/8 Lg.; For PE554S & PE554S-C)
21	210112	1	Strain Relief Bushing
22	205189	1	Decal (Ground)
23	15993	1	Strain Relief Bushing
24	304718	1	Hand Switch Assembly ( <b>NOT</b> part of AHC-10E; See Parts List No. 101644)
25	10197	3	Hex Nut (10-24; For PE554S & PE554S-C)
26	11856	1	Screw (10-24 x 1" Lg.)



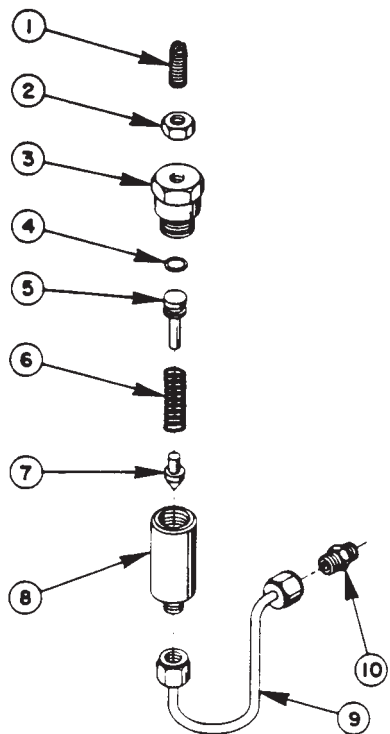


# GENERAL PUMP ASSEMBLY



Item No.	Part No.	No. Req'd	Description	Item No.	Part No.	No. Req'd	Description
1	10016	3	Soc. Hd. Cap Screw (1/4-20 UNC X 1" Lg.)	9	20771	1	Poppet
2	*27207	1	Basic Pump Ass'y Replacement	10	10425	1	Compression Spring (3/8 O.D. X 3/4 Lg.)
3	251689	1	Filler Plug (For all except AHC-10E)	11	10261	1	Copper Washer (3/4 X 19/32 X 1/32)
	20937	1	Filler Plug (For AHC-10E)	12	20770	1	Connector (Torque to 40/50 ft. lbs.)
4	40064WH2	1	Cover	13	10015	2	Soc. Hd. Cap Screw (1/4-28 UNF X 1" Lg.; Torque to 130/180 in. lbs.)
	64856BK2	1	Cover (For 60014 & 60018)	14	10177	10	Mach. Screw
5	40164	1	Gasket	15	10266	1	O-ring (3/8 X 1/4 X 1/16)
6	22360	1	Pressure Regulator Ass'y (See below)	16	10268	1	O-ring (1/2 X 3/8 X 1/16)
	47647	1	Pressure Regulator Ass'y (For AHC-10E; See Form No. 102581)	17	11863	1	Teflon Backup Washer
7	21278	1	Relief Valve (Set at 10,100/10,700 PSI)	18	20787	1	Valve Connector
	21278-50	1	Relief Valve (Set at 5,100/5,700 PSI)	19	10430	2	Tube Sleeve
	207975-105	1	Relief Valve (Set at 10,000/10,500 PSI; For PE554C & PE554C-C)	20	10431	2	Tube Nut
8	20776	1	Valve Body	21	21045	1	Oil Line
				22	21344	1	Filter Ass'y (Includes Item 23)
				23	10300	1	O-ring (5/8 X 15/32 X 5/62)
				24	200415	1	O-ring (13/16 X 5/8 X 3/32)

\*Includes all items on sheet 12 of 15 and items 1, 7, 8, 9, 10, 11, 12, 13, 15 & 22 on this sheet.



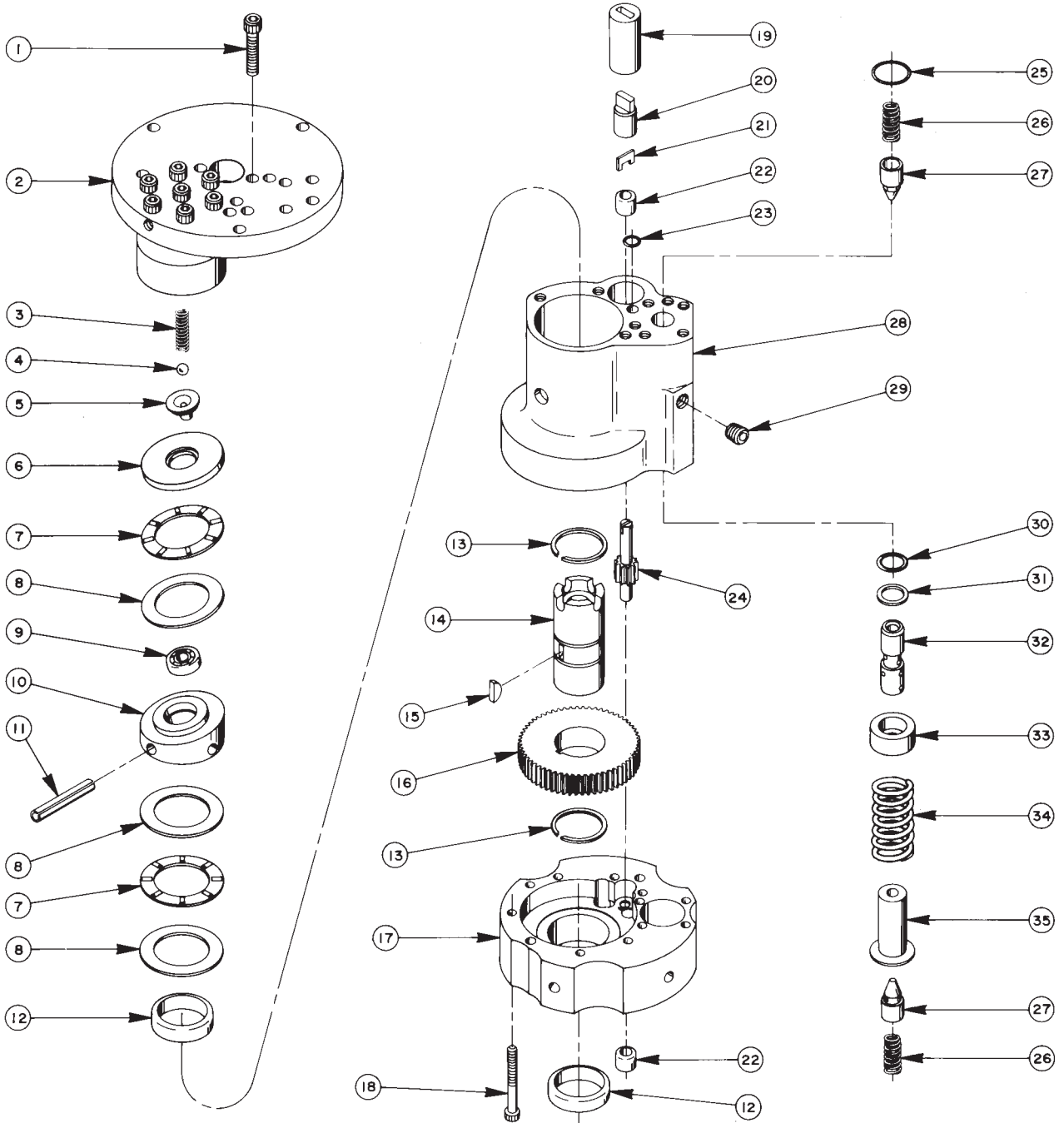
### PRESSURE REGULATOR ASSEMBLY

Item No.	Part No.	No. Req'd	Description
1	22362	1	Adjusting Screw
2	10386	1	Hex Jam Nut
3	21305	1	Valve Cap
4	10268	1	O-ring (1/2 X 3/8 X 1/16)
5	21306	1	Spring Guide
6	10495	1	Compression Spring (1/2 O.D. X 1-5/8 Lg.)
7	21046	1	Valve Stem
8	22361	1	Body
9	29267	1	Oil Line Ass'y (With nuts)
10	14844	1	Connector Fitting

Note: Shaded areas reflect last revision(s) made to this form.



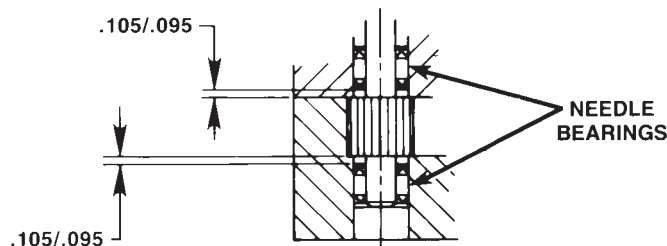
# BASIC PUMP ASSEMBLY



Item No.	Part No.	No. Req'd	Description
1	10020	9	Soc. Hd. Cap Screw (1/4-20 UNC X 1-1/4 Lg.: Torque to 170-180 in. lbs.)
2	33113	1	High Pressure Pump Ass'y (See sheet 13 of 15)
3	10361	1	Compression Spring (1/4 O.D. X 1" Lg.)
4	10375	1	Steel Ball (1/4" dia.)
5	23547	1	Bearing Top Plate
6	23548	1	Top Plate
7	11228	2	Thrust Bearing
8	11813	3	Bearing Race
9	11814	1	Ball Bearing
10	23549	1	Angle Plate
11	11955	1	Roll Pin (1/4" dia. X 1-3/4 Lg.)
12	11064	2	Needle Bearing
13	11261	2	Retaining Ring
14	23556	1	Shaft
15	11821	1	Woodruff Key
16	23574	1	Gear
17	40072	1	Pump End Plate
18	10001	13	Soc. Hd. Cap Screw (#10-32 UNF X 1-3/4" Lg.; Torque to 50 in. lbs.)
19	21091	1	Coupling
20	21092	1	Adapter
21	21093	1	Key
22	11198	2	Needle Thrust Bearing (See Note below)
23	10266	1	O-ring (3/8 X 1/4 X 1/16)
24	20774	1	Drive Gear
25	10303	1	O-ring (7/8 X 3/4 X 1/16)
26	10425	2	Compression Spring (3/8 O.D. X 3/4 Lg.)
27	20771	2	Poppet
28	40071	1	Pump Body
29	10427	1	Pipe Plug (1/8" NPTF)
30	10271	1	O-ring (11/16 X 1/2 X 3/32)
31	12389	1	Teflon Backup Washer (11/16 X 1/2 X 1/16)
32	20849	1	Spool
33	23255	1	Spring Guide
34	10426	1	Compression Spring (1" O.D. X 1-13/16 Lg.)
35	23256	1	Spring Guide



## NEEDLE BEARING INSTALLATION SPECIFICATIONS

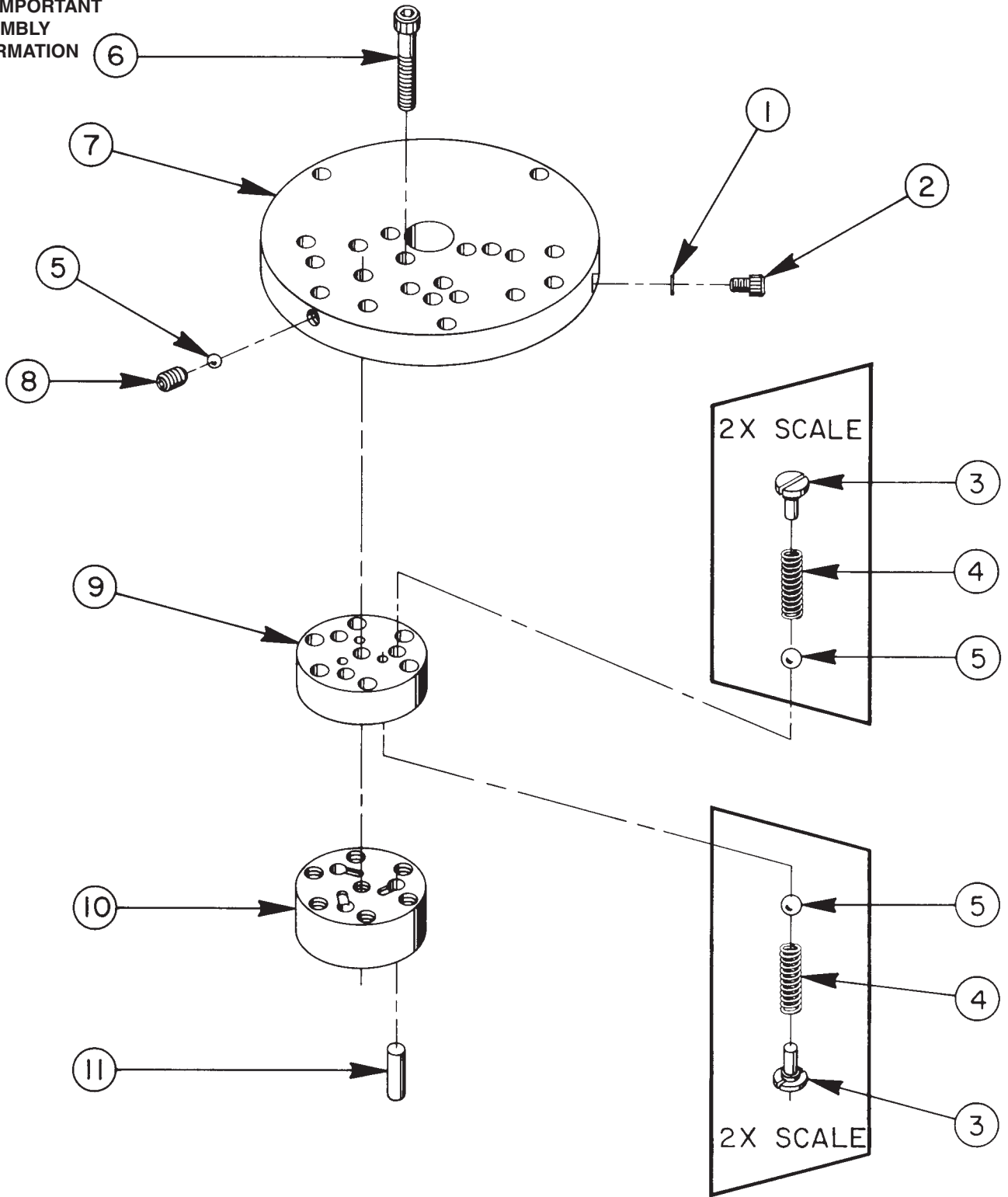


When replacing the needle bearings on the drive gear of the basic pumps, the dimensions shown must be as specified.

# HIGH PRESSURE PUMP ASSEMBLY



SEE DIAGRAM ON  
REVERSE SIDE  
FOR IMPORTANT  
ASSEMBLY  
INFORMATION

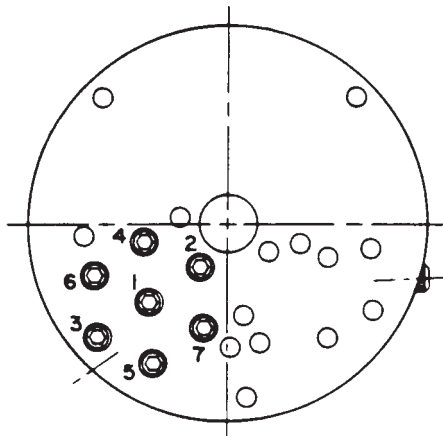


### 33113 PUMP ASS'Y 3 Pistons -- 9/32 Dia.

Item No.	Part No.	No. Req'd	Description
1	10442	1	Copper Washer (3/8 X 1/4 X 1/32)
2	10002	1	Soc. Hd. Cap Screw (1/4-20 UNC X 3/8" Lg.; Torque to 140/160 in. lbs.)
3	24549	6	Valve Guide
4	10445	6	Compression Spring (5/32" O.D. X 3/4" Lg.)
5	12223	7	Steel Ball
6	10023	7	Soc. Hd. Cap Screw (1/4-20 UNF X 1-1/2" Lg.; Torque to 170/180 in. lbs.; See note below)
7	50411	1	Top Plate
8	10519	1	Soc. Set Screw (1/4-20 UNC X 3/8 Lg.; Torque to 65/70 in. lbs.)
9	40630	1	Valve Head
10	41062	1	Pump Barrel
11	21628	3	Piston



### BOLT TIGHTENING SEQUENCE

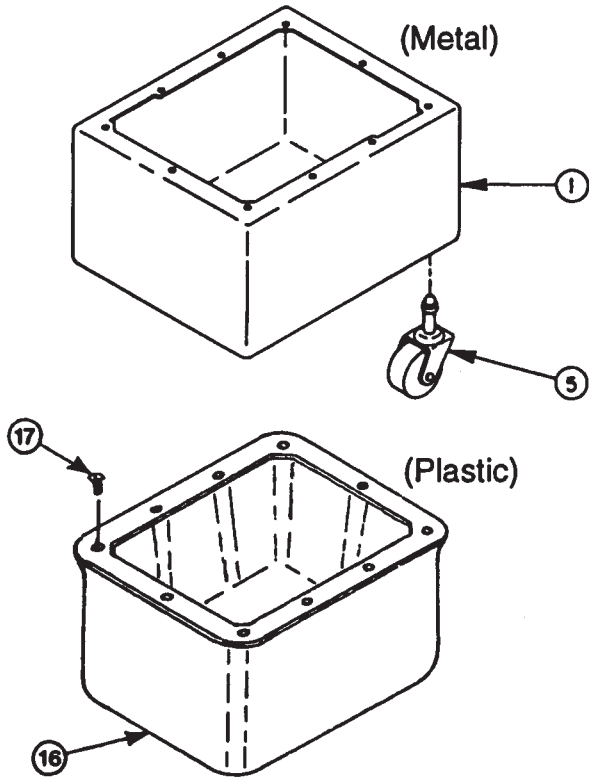


**NOTE: Assemble in sequence shown. Lubricate under head and on threads. Torque to 180 in. lbs.**

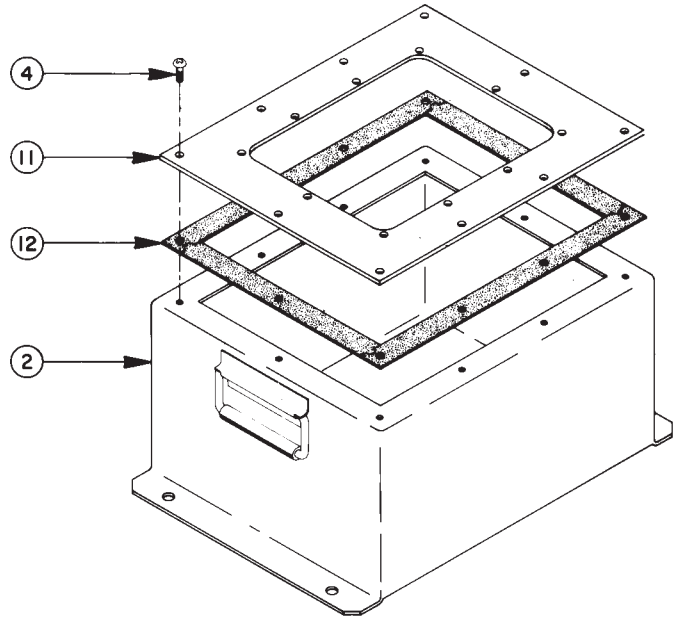


# RESERVOIR ASSEMBLIES

## 2 GAL. RESERVOIR

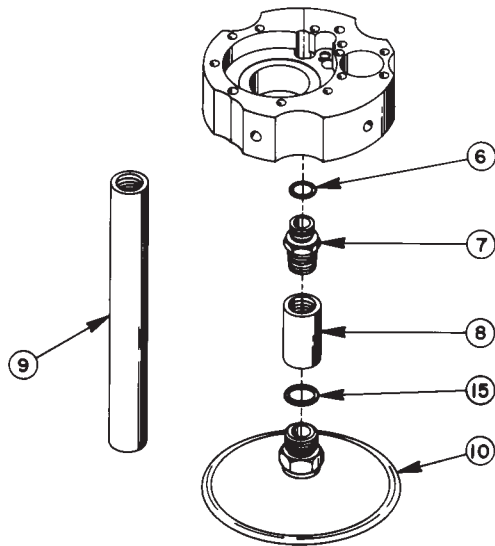


## 5 & 10 GAL. RESERVOIRS

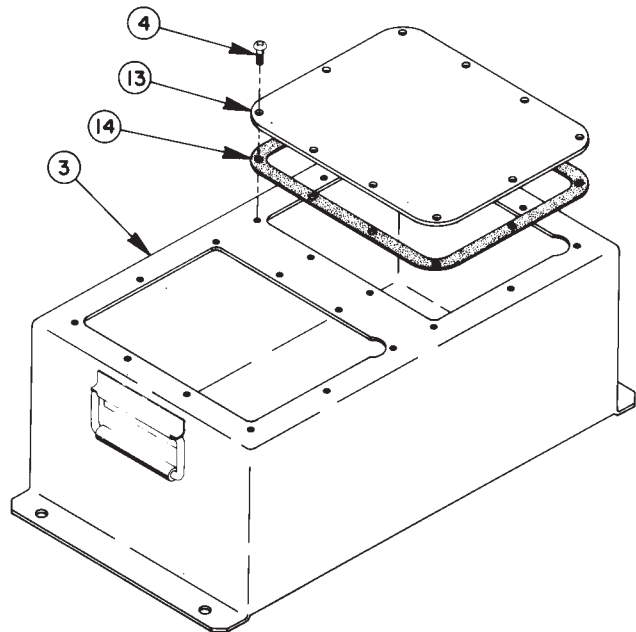


## FILTER & EXTENSIONS

Used on 5, 7 & 10 Gal. Reservoirs as Applicable



## 7 GAL. RESERVOIR



## RESERVOIR ASSEMBLIES

**NOTE:** For complete Reservoir Assembly order the following:

**209122** - Power Team complete 5 Gal. Reservoir Assembly

**209123** - Power Team complete 7 Gal. Reservoir Assembly

**RP100** - Power Team complete 10 Gal. Reservoir Assembly

These no's. include the following parts listed below as applicable.

Item No.	Part No.	No. Req'd	Description
1	<b>40063OR9</b>	1	2 Gal. Reservoir
	<b>60597OR9</b>	1	2 Gal. Reservoir with handles & drain
	<b>61799OR9</b>	1	2 Gal. Reservoir with drain plug
	<b>66505OR9</b>	1	2 Gal. Reservoir (Aluminum; For PE554S-BOLT)
	<b>64364BK2</b>	1	2 Gal. Reservoir (For AHC-10C)
2	<b>40137OR9</b>	1	5 Gal. Reservoir
	<b>40193OR9</b>	1	10 Gal. Reservoir
3	<b>50051OR9</b>	1	7 Gal. Reservoir
4	<b>10177</b>	10	Machine Screw (1/4-20 UNC X 3/4 Lg.)
5	<b>10494</b>	4	Swivel Caster (For 2 gal. Res.)
6	<b>10300</b>	1	O-ring (5/8 X 15/32 X 5/64)
7	<b>20879</b>	1	Connector
8	<b>22032</b>	1	Suction Line (For 5 & 7 Gal. Res.)
9	<b>22038</b>	1	Suction Line (For 10 Gal. Res)
10	<b>21344</b>	1	Filter Assembly
11	<b>40194AL2</b>	1	Adapter Cover Plate (For 5 & 10 Gal. Res.)
12	<b>40490</b>	1	Gasket (For 5 & 10 Gal. Res.)
13	<b>40188AL2</b>	1	Cover Plate (For 7 Gal. Res.)
14	<b>40164</b>	1	Gasket (For 7 Gal. Res.)
15	<b>10527</b>	1	O-ring (13/16 X .644 X .087)
16	<b>61165</b>	1	2 Gal. Plastic Reservoir
17	<b>209799</b>	10	Self-tapping Screw (1/4-10 x 7/8 Lg.)



### PARTS NOT SHOWN

<b>309219</b>	2	Trade Name Decal
<b>17586</b>	1	Sight Gauge (For PE554S-BOLT)
<b>350431</b>	1	Sight Gauge (For AHC-10E)

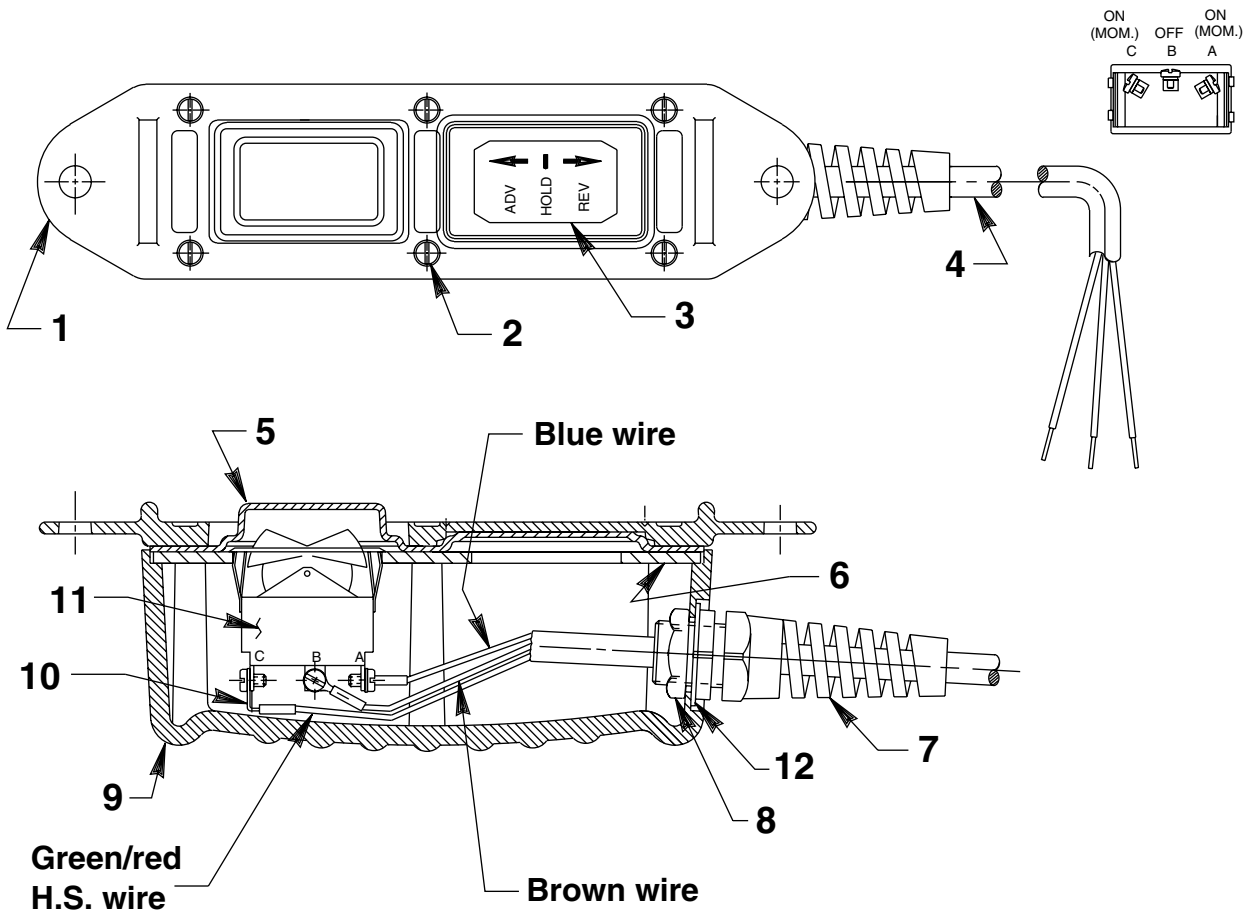
Refer to any operating instructions included with this product for detailed information about operation, testing, disassembly, reassembly, and preventive maintenance.

Items found in this parts list have been carefully tested and selected. **Therefore: Use only genuine Power Team replacement parts!**

Additional questions can be directed to our Technical Services Department.

# REMOTE HAND SWITCH ASSEMBLY

No. 307491



Item No.	Part No.	No. Req'd	Description
1	420050-1	1	Cover
2	250248	6	Screw (4-24 x 3/4 Lg.)
3	202776	1	Decal
4	12293	25 ft.	Cable (16/3 SJTO)
5	420050-2	1	Gasket
6	420050-3	1	Switch Mounting Plate
7	251818	1	Strain Relief Connector
8	251802	1	Locknut (3/4-16 UNF; Torque to 30/35 in. lbs.)
9	420050-4	1	Switch Housing
10	12311	3	Ring Tongue Terminal
11	16773	1	Rocker Switch
12	253607	1	Gasket